

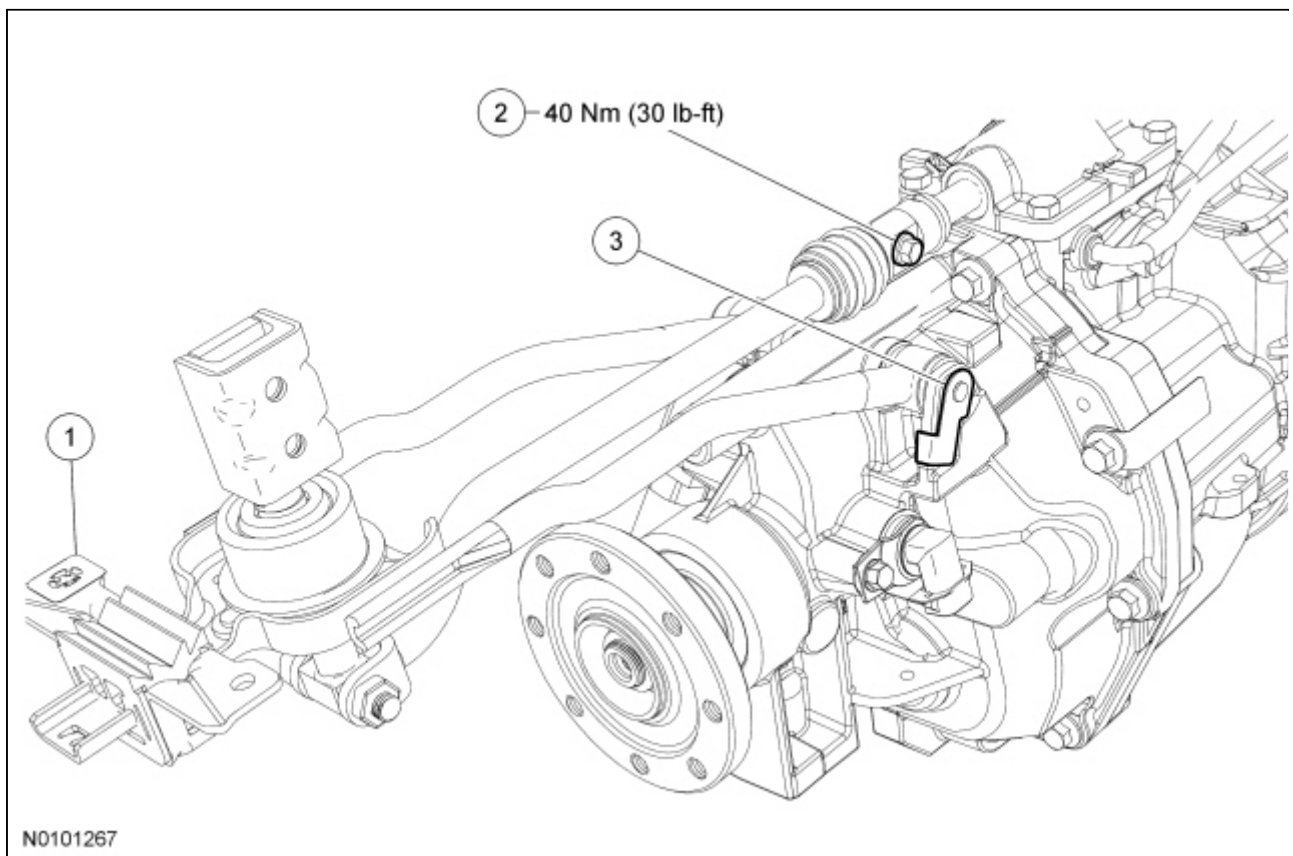
Transmission

Material

Item	Specification
MERCON® V Automatic Transmission Fluid XT-5-QM (or XT-5-QMC) (US); CXT-5-LM12 (Canada)	MERCON® V
Premium Long-Life Grease XG-1-C or XG-1-K (US); CXG-1-C (Canada)	ESA-M1C75-B
Threadlock and Sealer TA-25	WSK-M2G351-A5

Installation

1. If removed, install the gearshift lever assembly.
 1. Position the gearshift assembly in place on the transmission.
 2. Install the gearshift assembly bolt.
 - Tighten to 40 Nm (30 lb-ft).
 3. Install the gearshift lever assembly retainers. Make sure they are clipped in place correctly.



2. **NOTE:** Note that the crossmember hump side goes up.

If removed, install the transmission rear support insulator and the rear transmission support insulator center bolt.

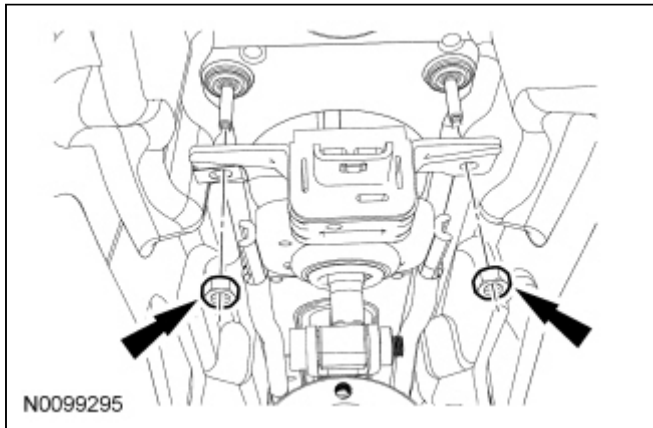
- Tighten to 70 Nm (52 lb-ft).

3. **NOTE:** Before installing the transmission, the input shaft must be cleaned and lightly lubricated with grease.

NOTE: When installing the transmission with the gearshift lever attached, position the gear shifter into NEUTRAL position, so that the shifter will not damage the shift boot.

Install the transmission at a 45-degree angle. With the input shaft in the pilot bearing, rotate the transmission counterclockwise 45 degrees. Align the dowels and install.

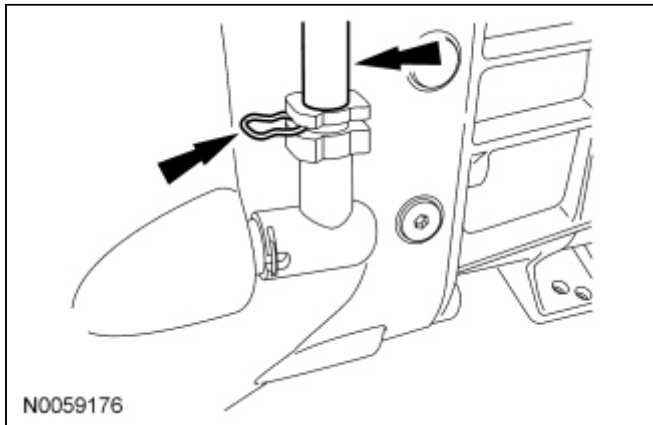
4. Install the 2 rear gearshift lever nuts.
 - Tighten to 20 Nm (177 lb-in).



5. Raise the transmission.
6. **NOTE:** Insert the clutch hydraulic tube into the clutch slave cylinder and install the clip before tightening the transmission-to-engine bolts.

Install the 7 transmission-to-engine bolts.

- Tighten to 45 Nm (33 lb-ft).

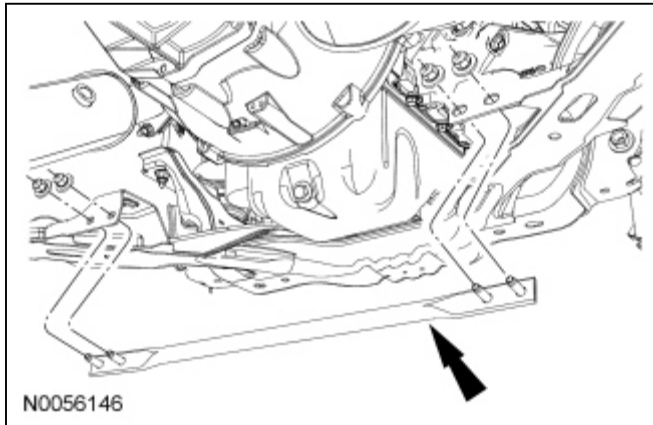


7. Remove the under hoist stand and the block of wood from the oil pan. Attach the wire harness at the front of the engine oil pan.
8. **NOTE:** The crossmember hump side goes up.

Install the transmission crossmember. For additional information, refer to [Section 502-00](#).

9. Connect the electrical connectors to the RH side of the transmission. Attach the harness to the transmission.
10. Connect the electrical connectors to the LH side of the transmission. Attach the harness to the transmission.

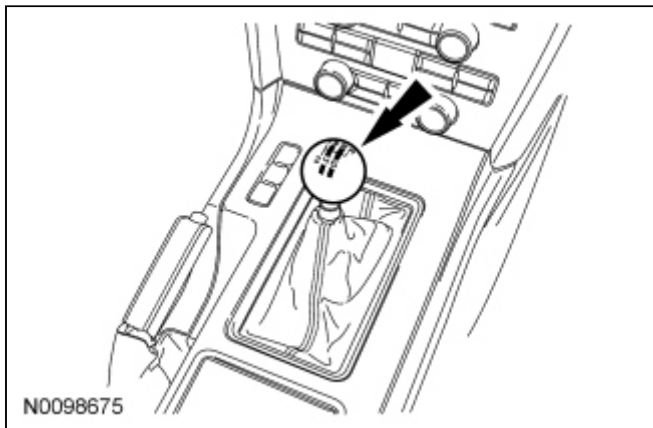
11. Install the subframe cross brace and the 4 subframe cross brace bolts.
 - Tighten to 48 Nm (35 lb-ft).



12. Install the starter motor. For additional information, refer to [Section 303-06](#).
13. Install the catalytic converter assembly (H-pipe). For additional information, refer to [Section 309-00](#).
14. **NOTE:** Align the index marks on the driveshaft flange and pinion flange, and the driveshaft flange and transmission output shaft flange.

Install the driveshaft. For additional information, refer to [Section 205-01](#).

15. Install the upper gearshift lever and upper gearshift lever bolts.
 - Tighten to 35 Nm (26 lb-ft).
16. Install the gearshift lever boot, chrome bezel and knob.



17. Connect the battery ground cable. For additional information, refer to [Section 414-01](#).
 18. Check, and as necessary, fill the transmission with manual transmission fluid. The total fill capacity is 3.46L (3.65 qt). Apply threadlock and sealer to the fill plug threads and install the fill plug.
 - Tighten to 25 Nm (18 lb-ft).
 19. Fill the brake and clutch reservoir. Bleed the clutch hydraulic system. For additional information, refer to [Section 308-00](#).
-

